

WELSH

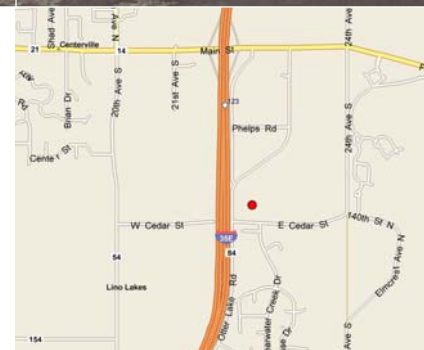


INNOVATION FROM THE GROUND UP

For Lease

Northern Wholesale Building
6800 Otter Lake Road
Lino Lakes, Minnesota

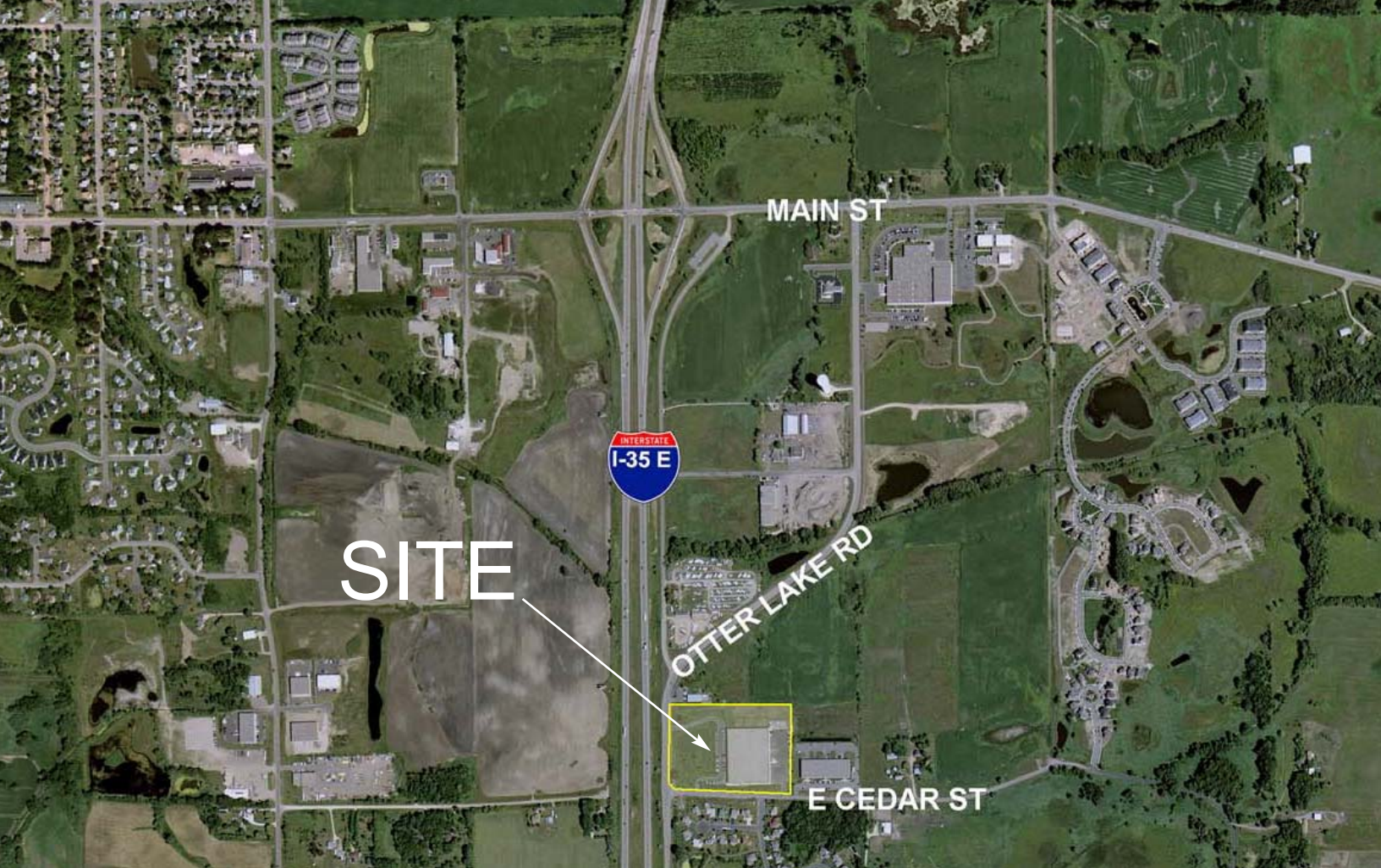
- 105,185 total building square feet
- 35,000 square foot expansion available
- Built-to-suit
- Dock and drive-in doors
- 22' clear height
- Ample parking
- Visible to I-35E
- Built in 1996
- Great accessibility and visibility to I-35E and County Road 14



For more information contact:

Mike Brass
612.750.4312
mbrass@welshco.com

NAIWELSH



For more information contact:

Mike Brass

612.750.4312

mbrass@welshco.com



Northern Wholesale Building For Lease

Building Address:

6800 Otter Lake Road
Lino Lakes, MN

Mike Brass

- 612.750.4312
- mike@mikebrass.com
- www.mikebrass.com

Building Size:

105,185 SF (expandable to 140,185)

Square Feet Available:

35,000 square feet (expansion available)

Acres:

11.36 acre site

www.welshco.com

Net Lease Rates:

\$9.00/\$4.50 per square foot

Tax & CAM:

\$2.60 per square foot

Clear Height:

22'

Loading:

One drive-in door
Four dock doors